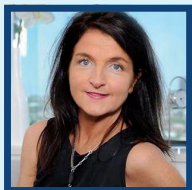


## Epworth Breast Service Specialist Breast and Oncoplastic Surgeons

Fewer than 8% of Australian surgeons are female, and the Epworth Breast Service is therefore very fortunate and proud to be able to offer our breast patients the expertise of two highly trained and extremely experienced female specialist breast and oncoplastic surgeons, both of whom have extensive international training and experience.



**Miss Jane O'Brien**  
MBBS 1985  
University of Melbourne  
FRACS 1995



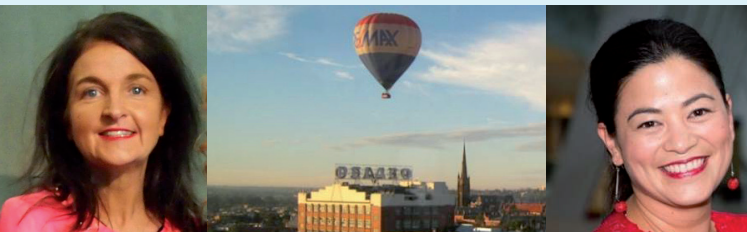
**Miss Melanie Walker**  
MBBS 1994  
Monash University  
FRACS 2002

Jane O'Brien is a specialist breast and oncoplastic surgeon whose practice is exclusively confined to breast work, encompassing the assessment, diagnosis and treatment of all benign and malignant conditions of the breast, and surveillance and prophylactic surgery for high risk groups.

Her area of special interest is in "oncoplastic" breast surgery, aimed at maximising the cosmetic result following breast conservation surgery for breast cancer using advanced surgical techniques. She has a strong interest in genetic breast cancers, the treatment of breast cancer in young women and nipple-sparing mastectomy and reconstruction, both in the preventive setting and as treatment for cancer.

Jane completed her medical training in 1985, graduating from the University of Melbourne. Following advanced surgical training at St Vincent's Hospital, Melbourne which she completed in 1994, she undertook a two year breast surgical fellowship in Melbourne and Edinburgh, Scotland. She then worked as a consultant breast surgeon in the United Kingdom for a period of eight years at a number of world class, internationally renowned breast units, during which time she gained extensive experience in advanced breast surgical techniques. Following her return to Melbourne, Jane established the Epworth Breast Service in 2005.

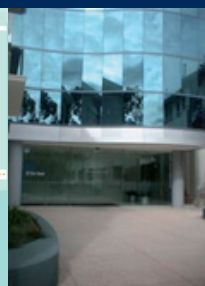
Following completion of her advanced surgical training in Melbourne in 2002, Melanie Walker spent three years in the United Kingdom where she underwent post fellowship specialist training in breast surgery and gained wide experience at several world class breast units. This included a year as an oncoplastic fellow at the famous Canniesburn Plastic Surgery Unit in Glasgow. Melanie is on the executive committee of the Australasian society of breast surgeons (BreastSurgANZ) and is member of their oncoplastic and post fellowship training sub-committees.



## Location

The Epworth Breast Service consulting rooms are located on the 7th floor of the Epworth Centre, entrance 32 Erin St, Richmond, in a modern, purpose-built suite, providing a calming environment with impressive views over Richmond. The aim is to provide as relaxing an experience as possible under the circumstances, with background music, a plasma screen aquarium and current designer magazines.

Melways Ref Map 2G, J5



## Public Transport and Parking

If you are coming to Epworth Richmond from the city by tram, catch either the North Balwyn 48 tram from Collins Street or the East Burwood /Vermont South 75 tram from Flinders Street and get off at tram stop number 15 in Bridge Rd. By train, the closest station to Epworth Richmond is West Richmond Station, which is on the South Morang and Hurstbridge Lines. Richmond Station is also close to the hospital, which is located on Swan Street and is approximately a 15 minutes walk from Epworth Richmond.

Epworth Richmond has limited undercover parking. The entrance to the car park is on Bridge Road. Parking is also available in adjacent streets, but please take note of council restrictions. Also be aware that there are times when the car park becomes full, and consequently there will be a limited number of spaces. The car park is open every day from 6.00am to 10.45pm.

## Epworth Breast Service

**Specialist Breast and Oncoplastic Surgery**  
**Comprehensive Multidisciplinary Breast Cancer Care**

**Epworth Centre**  
**Level 7**  
**32 Erin St**  
**Richmond 3121**

**T: 03 9421 4218 F: 03 9421 5148**

**[www.melbournebreastcancersurgery.com.au](http://www.melbournebreastcancersurgery.com.au)**



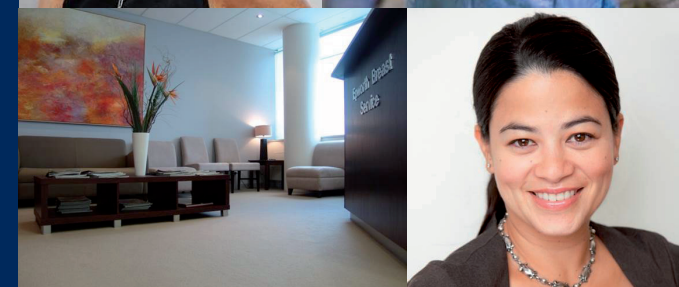
## Epworth Richmond

Excellence. Everywhere. Everyday.

## Breast Service



**Epworth  
Richmond**



Epworth  
Richmond

Epworth  
Rehabilitation

Epworth  
Freemasons

Epworth  
Eastern

Epworth  
Healthcare

**“A specialist Breast Service providing rapid access, integrated, patient- centred care delivered by a dedicated multidisciplinary team specialising in breast disease”**

## Epworth Breast Service offers:

- Expert evaluation of all breast problems (both benign and malignant) with rapid access to specialist breast surgeons especially for patients referred with urgent breast problems, with a strong emphasis on accurate and timely diagnosis
- Access to a full diagnostic work up including breast imaging (mammography/ultrasound and MRI) and pathology (fine needle aspiration/core biopsy) as required, with rapid provision of results.
- Bedside portable hand-held ultrasound in both the consulting room and the operating theatre.
- Facilities to perform fine needle aspiration, needle core and punch biopsy in the rooms, as clinically appropriate
- Expert second opinions for patients who have not yet undergone/ completed their primary breast cancer surgery.
- Access to a breast care nurse at the initial visit and throughout the entire patient journey. Our Breast Care Nurses are based in the consulting suites, and are available to all patients with either benign or malignant breast conditions.
- Personal patient information 2GB USB memory stick silicone bracelets for breast cancer patients (pictured below) loaded with electronic versions of the appropriate patient resources including DVDs on breast reconstruction etc, in a tailored fashion for each individual patient depending on specific information needs.



- Multidisciplinary Breast Cancer Care with provision of a full range of all treatment modalities delivered by a multidisciplinary team in accordance with agreed clinical guidelines, emphasizing compliance with evidence based practice. We aim to provide an integrated approach to breast care in which medical and allied health professionals consider all relevant treatment options and, together with the patient, collaboratively develop an individual treatment plan for each patient through our weekly multidisciplinary meetings which have been in operation since the service was established in 2005.
- Post hospital discharge support from our breast care nurses and Epworth “Hospital in the Home”
- Medical and Radiation oncology services, with both chemotherapy and radiotherapy administered on site at Epworth Richmond.

## Specialising in:

- Surgical management of benign breast conditions and breast cancer with access to the full range of breast surgical options including sentinel node biopsy and immediate breast reconstruction.
- Surgery for screen detected breast cancers. (Both Jane O'Brien and Melanie Walker have appointments with Breastscreen Victoria.)
- Oncoplastic Breast Surgery, a relatively new surgical subspecialty aimed at maximising cosmetic results in breast conservation surgery for breast cancer using advanced surgical techniques.

- Surveillance of high risk groups, including women carrying the BRCA breast cancer gene mutation.
- Preventive Risk Reduction Nipple-Sparing Mastectomy with reconstruction
- Treatment of breast cancer in younger women, with particular attention to the specific issues of genetic assessment and fertility options.

## To Make an Appointment:

Please telephone on 03 94214218 or fax your GP referral on 03 9421 5148. Appointments are triaged on clinical priority, and it is therefore necessary for our experienced office staff to ask a number of relevant clinical questions and perhaps obtain imaging reports, prior to an appointment being scheduled. For this reason we do not offer an online appointment booking facility. Our practice manager, Mary, has been with the service since it was established in 2005, and is extremely experienced at appropriate appointment scheduling.

A Patient Registration Form may be downloaded on [www.melbournebreastcancersurgery.com.au](http://www.melbournebreastcancersurgery.com.au), and faxed through to 9421 5148 prior to the appointment. We ask that patients arrive 15 minutes prior to their first consultation if completed forms have not been previously submitted.

We understand that for women who have a confirmed or a strongly suspected diagnosis of breast cancer, the wait to see a specialist can be a very stressful time. Sometimes it may take some time to get in to see your own GP prior to a specialist appointment being set in motion. In an attempt to streamline this process we have in place a rapid access appointment service for women who have a confirmed diagnosis of breast cancer or those in whom imaging is highly suspicious of breast cancer.

Rapid Access Appointments are available only for women with:

- A confirmed Breast Cancer diagnosis on needle biopsy
- A strongly suspected Breast Cancer on Imaging (Mammogram/Ultrasound)

Rapid Access Appointment Forms may be downloaded on [www.melbournebreastcancersurgery.com.au](http://www.melbournebreastcancersurgery.com.au) and faxed to 9421 5148, and an urgent appointment (within 24/48 hours) will be offered.

## Patients should bring with them to their appointment:

- A valid GP referral. This enables a Medicare rebate to be claimed for the consultation.
- Private Health Insurance/Medicare details
- A list of current medications,
- Any previous mammograms/breast imaging films and the copies of the relevant reports. This is extremely important. Failure to bring recent breast imaging films to the scheduled consultation with the specialist surgeon is likely to result in postponing and rescheduling of the appointment.
- Biopsy/pathology reports as appropriate. The surgeon will require all recent breast investigation results during the consultation, and if the patient ensures they are made available, delays can be avoided. This is especially important for ‘second’ opinions.
- If imaging has been scheduled on the day prior to your appointment, the whole visit may take several hours. Ensure car parking, public transport, child minding and other arrangements allow for this.

## Payment

- The Epworth Breast Service is a private facility. The practice charges above the schedule fee and does not bulk bill. A full list of charges and a copy of the Epworth Breast Service fee policy will be provided at the time of patient registration. We accept Visa and Mastercard, and EFTPOS facilities are available. Medicare Online facilities are available. Payment on the day of consultation is appreciated.

## Specialist Breast Care Nurses

The value of the specialist breast care nurse role as part of the multidisciplinary team in providing quality care for women has been increasingly recognised nationally and internationally as part of evidence-based best practice for breast care. Timely access to a breast care nurse can greatly assist women going through treatment for breast cancer and breast cancer patients repeatedly emphasise the importance of the role of their breast care nurses throughout their experience of breast cancer. The primary role of the breast care nurse is to support people who have or fear they have breast cancer, as well as their families and carers. They provide information, physical and psychological care and give practical advice to patients and carers from diagnosis to treatment, rehabilitation and beyond.

Breast care nurses have been available for over twenty years in Victoria; however access to a breast care nurse is sometimes variable and this has in the past often been particularly so in the private sector. Everyone affected by breast cancer should be able to access support from a breast care nurse.



The Epworth Breast Service has two breast care nurses (pictured above left) based in the consulting suites, who are available to all breast patients with either benign or malignant breast disease, for information, provision of educational resources, assistance with obtaining prostheses, psychosocial support and confidential counselling in a private, dedicated counselling room situated in the consulting suite.

The breast care nurses visit patients each day during their hospital stay to provide appropriate information and support. They assist with wound care/ any drains after the operation, and organise post discharge support if needed. They are involved in education regarding lymphoedema prevention and they also visit patients whilst they are undergoing any subsequent chemotherapy and radiotherapy here at Epworth Richmond.

Our breast care nurses are currently involved in the development and implementation of a tailored rehabilitation programme for our breast cancer patients after they have completed their primary treatment. The aim of the programme is to assist patients in obtaining maximal physical, social, psychological and vocational functioning within the limits created by the cancer and subsequent treatment, and has physical reconditioning and psycho-educational components.